

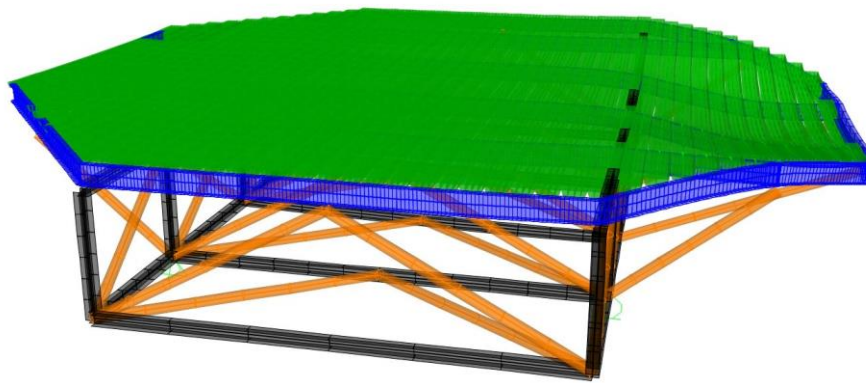
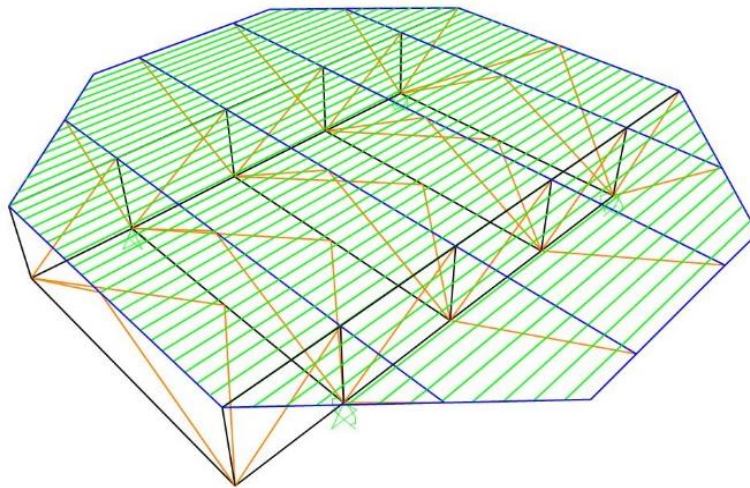
The helicopter deck has been designed in 2016.

DOI engineered a standard aluminum helicopter deck following a wide variety of class notations and National/International authorities rules. The helideck is suitable for ship shaped vessels and jack-up's.

For the main frame structure a Finite Element Analysis was carried out.

Scope of work included basic design plans and calculations of the following components:

- General layout
- Structure plans of the pancake
- Structure plans of the main frame including typical connection details
- Load case matrix
- Accelerations for ship shape vessels
- Accelerations for jack up units
- Finite Element Analysis of the pancake and main frame ▶



### Principal Characteristics

Length	22.49 m
Width	22.49 m
Length over all	25.25 m
Max Rotor diameter	22.20 m
Max take off weight	12.0 t

### Class Societies and National/International authorities

ABS  
Lloyd's Register  
Bureau Veritas  
RINA  
CAP 437  
MODU Code

©Copyright Dutch Offshore Innovators BV. This document and its contents are the intellectual property of Dutch Offshore Innovators BV, and as such this document and its content, or any part thereof, may not be made known, be copied, or be multiplied or in any other way used without the permission of Dutch Offshore Innovators BV.

### DUTCH OFFSHORE INNOVATORS

Kratonkade 748

3024 EX Rotterdam

THE NETHERLANDS

Telephone: +31-108414390/+31-611118642

Email: [info@dutchOI.com](mailto:info@dutchOI.com)