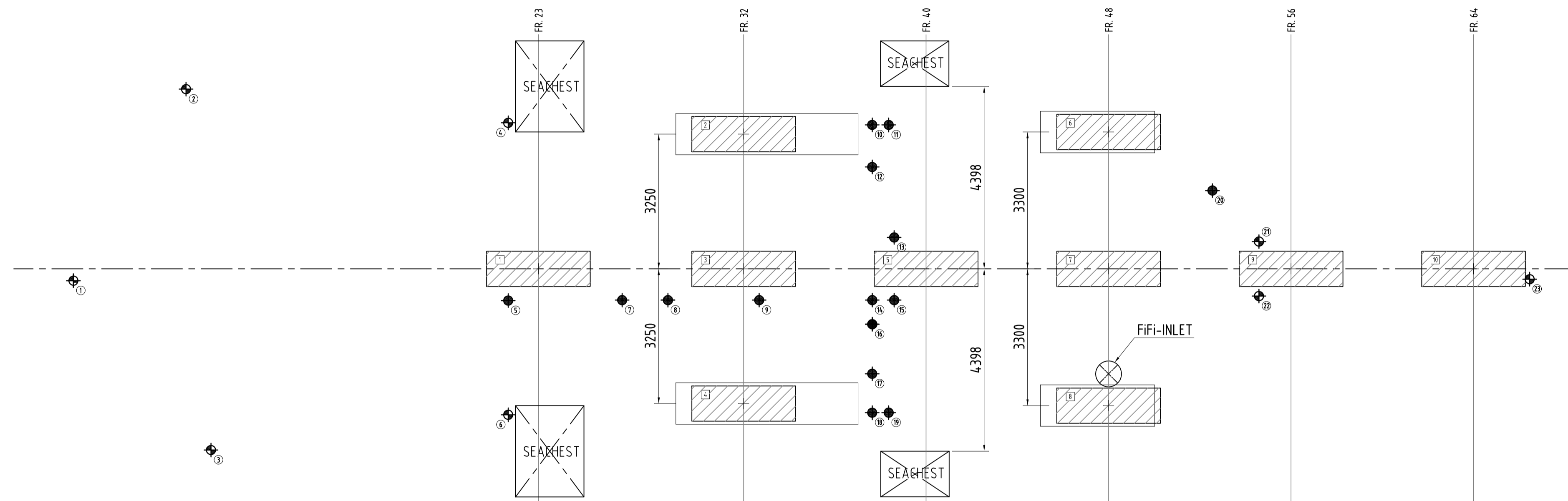
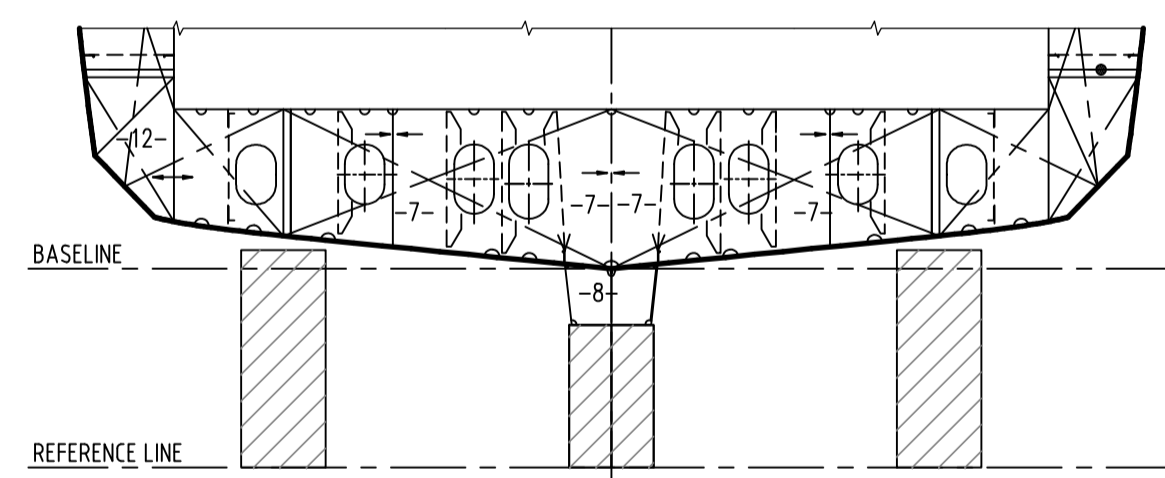


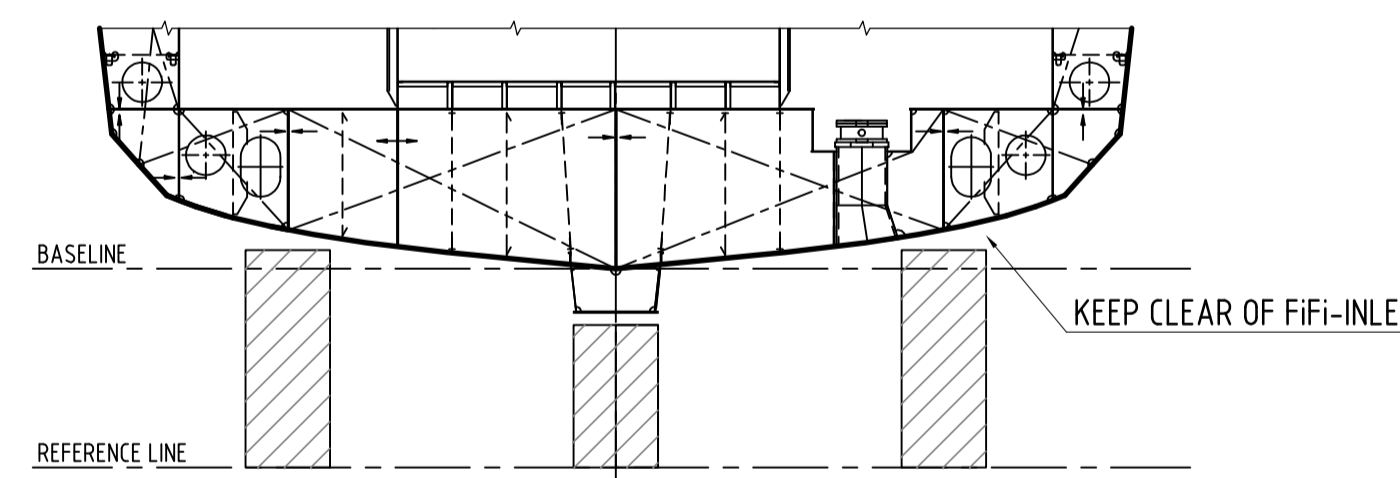
PROFILE VIEW



KEEL BLOCKS LAYOUT
TOP VIEW

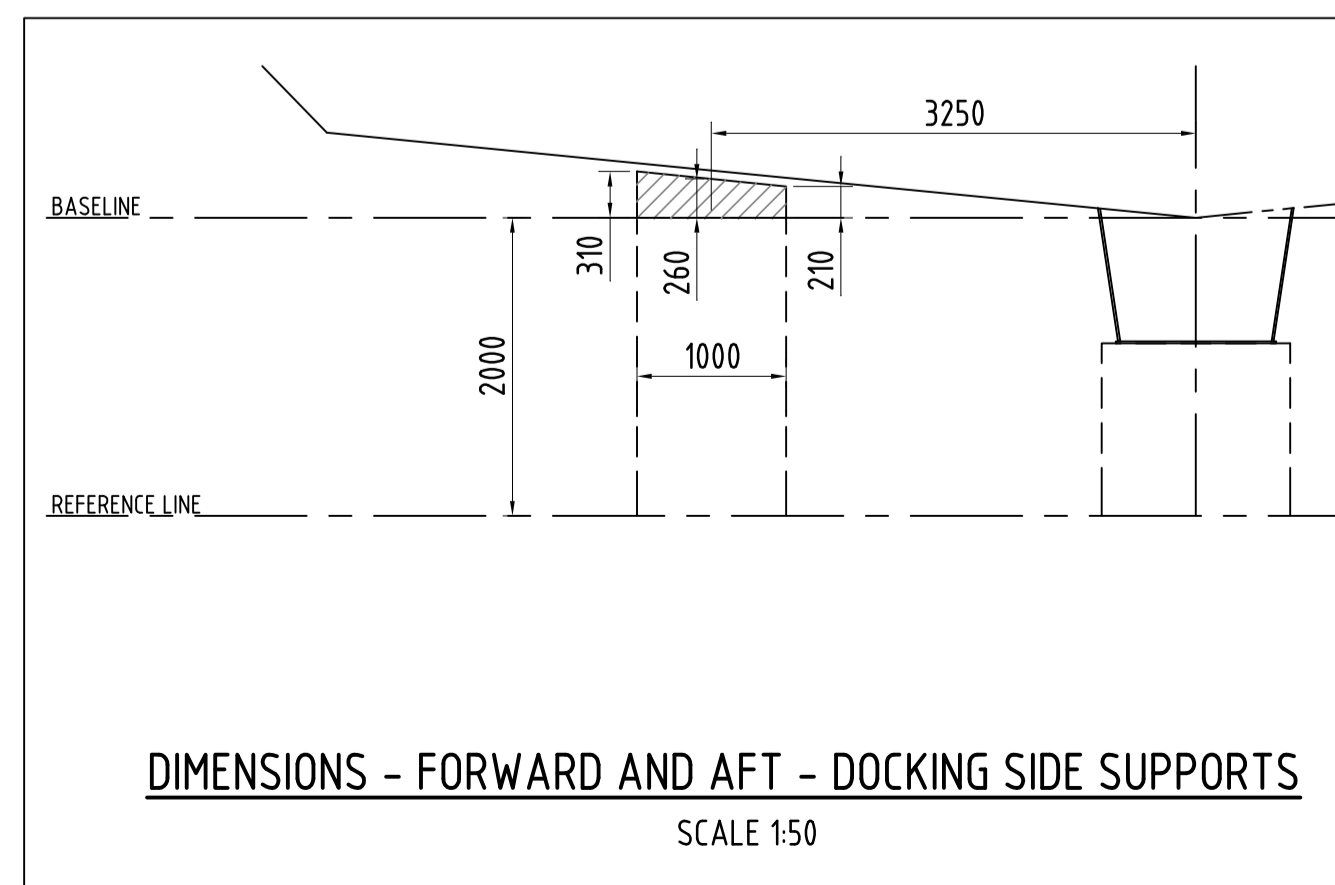


FR. 32

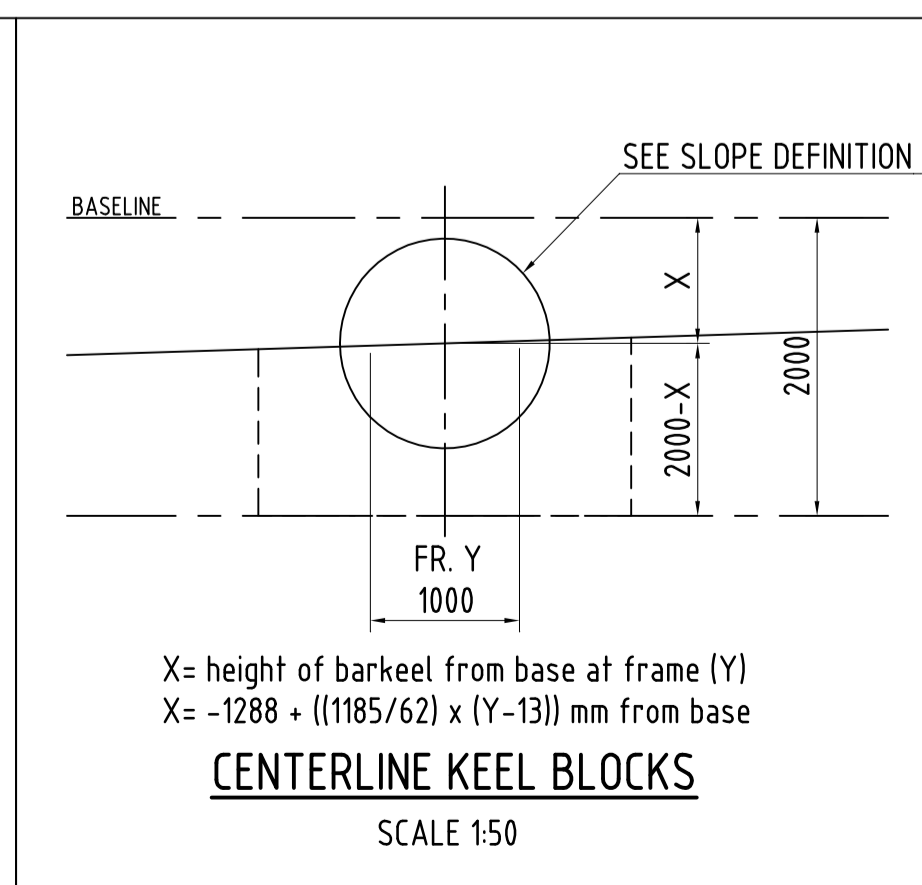


FR. 48

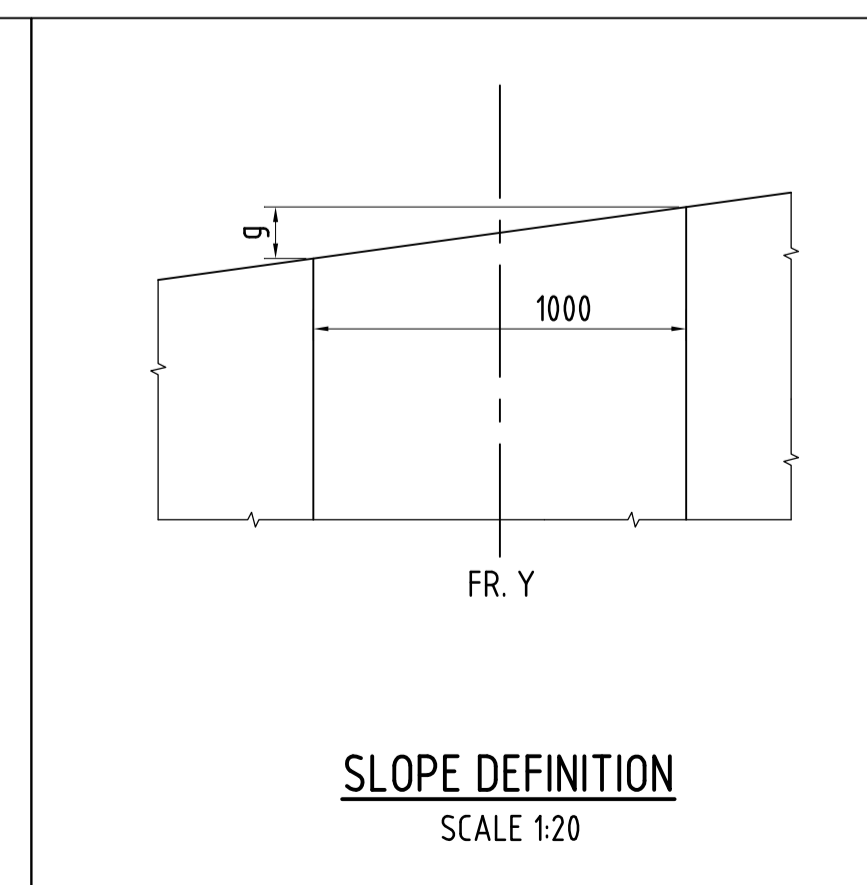
CENTERLINE BLOCK HEIGHTS				
BLOCK #	POSITION FRAME	HEIGHT X mm	2000-X mm	SLOPE g PER 1000 mm
1	23	1097	903	34,75
3	32	925	1075	34,75
5	40	772	1228	34,75
7	48	619	1381	34,75
9	56	466	1534	34,75
10	64	313	1687	34,75



DIMENSIONS - FORWARD AND AFT - DOCKING SIDE SUPPORTS
SCALE 1:50



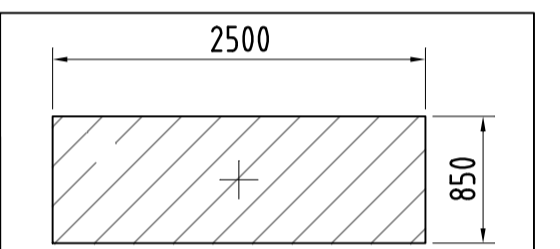
X= height of barkeel from base at frame (Y)
X= -1288 + ((1185/62) x (Y-13)) mm from base
CENTERLINE KEEL BLOCKS
SCALE 1:50



SLOPE DEFINITION
SCALE 1:20

DRAIN PLUG TABLE					
WATERTANK PLUGS			OIL TANK PLUGS		
NUMBER	TANK	POSITION	NUMBER	TANK	POSITION
1	VOID	Fr. 2+320 286 of C.L (SB)	5	F.O. CL AFT	Fr. 21+524 765 of C.L (SB)
2	F.W. BALLAST (PS)	Fr. 7+290 4498 of C.L (PS)	7	BILGE WATER	Fr. 26+358 755 of C.L (SB)
3	F.W. BALLAST (SB)	Fr. 8+341 4368 of C.L (SB)	8	SLUDGE	Fr. 28+365 755 of C.L (SB)
4	F.W. CARGO (PS)	Fr. 21+360 3522 of C.L (PS)	9	DISPERSANT	Fr. 32+365 755 of C.L (SB)
6	F.W. CARGO (SB)	Fr. 21+360 3520 of C.L (PS)	10	F.O. (PS)	Fr. 37+350 3471 of C.L (PS)
21	F.W. CARGO (PS)	Fr. 54+322 660 of C.L (PS)	11	F.O. FORE OUT (PS)	Fr. 35+190 3471 of C.L (PS)
22	F.W. CARGO (SB)	Fr. 54+322 660 of C.L (SB)	12	DIRTY OIL	Fr. 37+350 2456 of C.L (PS)
22	F.W. FORE PEAK	Fr. 65+254 250 of C.L (SB)	13	F.O. FORE IN (PS)	Fr. 38+322 757 of C.L (PS)
			14	F.O. CL SERVICE	Fr. 37+350 755 of C.L (SB)
			15	F.O. FORE IN (SB)	Fr. 38+322 755 of C.L (SB)
			16	F.O. DRAIN	Fr. 37+350 1337 of C.L (SB)
			17	LUB. OIL	Fr. 37+350 2530 of C.L (SB)
			18	F.O. (SB)	Fr. 37+350 3468 of C.L (SB)
			19	F.O. FORE OUT (SB)	Fr. 38+190 3468 of C.L (SB)
			20	SEWAGE	Fr. 52+300 1890 of C.L (PS)

MATERIAL	WOOD CROSS CUT GRAIN
STRENGTH CLASS	D30 minimum NEN-EN338
TYPE OF WOOD SUGGESTED	BILINGA, IROKO DENYA



DETAIL KEEL BLOCKS
SCALE 1:50

	WEIGHT	VCG	LCG	T aftmark	T foremark
LIGHT SHIP WEIGHT	775 ton	4572 mm	20205 mm	4218 mm	3142 mm
LOADING CONDITION 10	856 ton	4390 mm	20413 mm	4373 mm	3276 mm
LOADING CONDITION 12	1079 ton	3940 mm	20219 mm	4852 mm	3963 mm

PRINCIPAL DIMENSIONS:

LENGTH MLD.	40.15 m
RULE LENGTH	37.4 m
LENGTH B.P.	34.98 m
BREADTH MLD.	11.0 m
DEPTH MLD.	4.9 m
DRAUGHT (design)	4.0 m (approx.)
DRAUGHT (scantlings)	4.3 m (to baseline)
FRAME SPACING	550 mm
CLASSIFICATION	HULL, MACH, TUG, UNRESTRICTED NAVIGATION IWS MON-SHAFT AUT UMS
EQUIPMENT	2 x 675 kg POOL ACHORS, CHAIN CABLE 330 m CHAIN DIAMETER 26 mm, STEEL QUALITY U2

REV	DATE	DESCRIPTION	DRAWN	CHECK
C1	15 AUG 2017	INITIAL RELEASE	BvM	HJdV
C2	23 AUG 2017	BLOCK HEIGHT CHANGED	SN	HJdV
C3	28 AUG 2017	MINOR MODIFICATIONS	BvM	JB

© Copyright Dutch Offshore Innovators BV and Smit Lamnalco. This document and its content are the intellectual property of Dutch Offshore Innovators BV and Smit Lamnalco, and as such this document and its content, or any part thereof, may not be made known, be copied, or be multiplied or in any other way used without the permission of Dutch Offshore Innovators BV and Smit Lamnalco.

DUTCH OFFSHORE INNOVATORS Lloydkade 865 3024 WZ Rotterdam THE NETHERLANDS telephone: +31-108414390 email: info@dutchol.com internet: www.dutchol.com	 Waalhaven Oostzijde 85 3087 BM Rotterdam THE NETHERLANDS telephone: +31-880764800 email: info@smitlamnalco.com internet: www.smitlamnalco.com

TITLE	DOCKINGPLAN
PROJECT NUMBER	E-146
SCALE	1:75 ORIGINAL FORMAT A1 DOCUMENT NUMBER DN-100-01