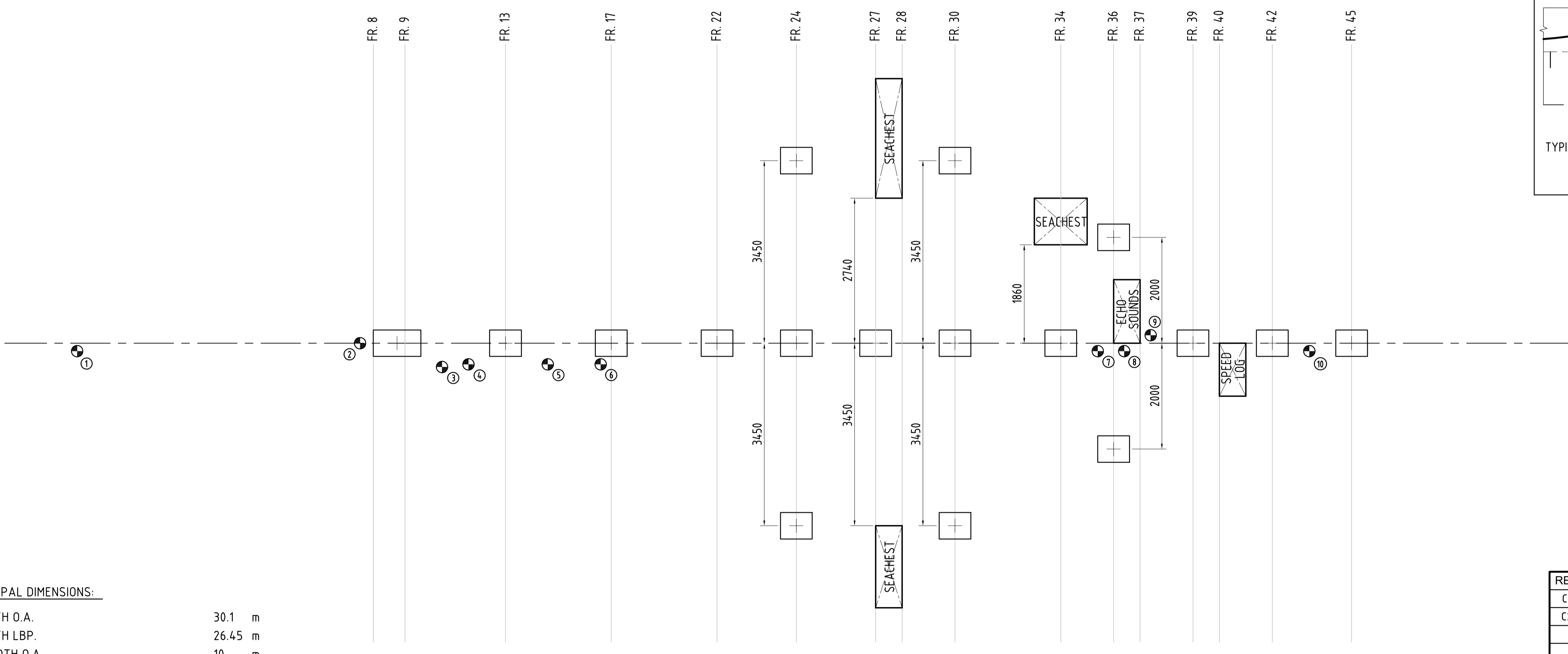


- Pillar at C.L., L=3.7 m
- Minimum HEB 120 or equivalent
- Maximum load 60 tons
- Use load spreader against hull
- If longer pillar is used, check for buckling

PROFILE VIEW



**KEEL BLOCKS LAYOUT
TOP VIEW**

PRINCIPAL DIMENSIONS:

LENGTH O.A.	30.1 m
LENGTH LBP.	26.45 m
BREADTH O.A.	10 m
DEPTH	4.81 m
DRAUGHT	3.7 m (to baseline)
DRAUGHT Dmax	4.05 m (to baseline)
FRAME SPACING	500 mm
LIGHT SHIP WEIGHT	518.9 ton
FULL LOAD	674.9 ton
LONG. CENTRE OF GRAVITY FROM FR. 0	11.858 m (Lightship) 11.928 m (Full load)

CLASSIFICATION **I HULL MACH, TUG, UNRESTRICTED NAVIGATION**
EQUIPMENT **2 MAIN ANCHORS, CHAIN DIAMETER 24 mm,
STEEL QUALITY Q2 (High tensile strength steel)**

KEEL BLOCKS TABLE		
FRAME	POSITION	HEIGHT
9	CENTERLINE	634 mm
13	CENTERLINE	634 mm
17	CENTERLINE	634 mm
22	CENTERLINE	634 mm
24	CENTERLINE	1018 mm
	PS/SB	1445 mm
27	CENTERLINE	1000 mm
30	CENTERLINE	1045 mm
	PS/SB	1515 mm
34	CENTERLINE	1100 mm
36	PS/SB	1341 mm
39	CENTERLINE	1169 mm
42	CENTERLINE	1211 mm
45	CENTERLINE	1339 mm

DETAIL 1
TYPICAL DIMENSION FOR
SIDE SUPPORT

DETAIL FR. 24
TYPICAL DIMENSION FOR
SIDE SUPPORT

DRAIN PLUG TABLE		
NUMBER	TANK	POSITION
1	BALLAST WATER 1	Fr. -4+400 150 of C.L. (SB)
2	SKEG	Fr.7+250 Centerline
3	FOAM TANK	Fr.10+300 450 of C.L. (SB)
4	COFFERDAM	Fr.11+300 400 of C.L. (SB)
5	BILGE HOLDING	Fr.14+300 400 of C.L. (SB)
6	DIRTY OIL	Fr.16+300 400 of C.L. (SB)
7	COFFERDAM	Fr.35+200 150 of C.L. (SB)
8	FRESH WATER(SB)	Fr.36+200 150 of C.L. (SB)
9	FRESH WATER(PS)	Fr.37+200 150 of C.L. (PS)
10	BALLAST WATER 2	Fr.43+200 150 of C.L. (SB)

REV	DATE	DESCRIPTION	DRAWN	CHECK
C1	3 MAR 2017	INITIAL RELEASE	BvM	HJdV
C2	6 MAR 2017	ADDED PRINCIPAL DIMENSIONS	BvM	HJdV

Copyright Dutch Offshore Innovators BV and Smit Lamnalco. This document and its content are the intellectual property of Dutch Offshore Innovators BV and Smit Lamnalco, and as such this document and its content, or any part thereof, may not be made known, be copied, or be multiplied or in any other way used without the permission of Dutch Offshore Innovators BV and Smit Lamnalco.

DUTCH OFFSHORE INNOVATORS Lloydkade 865 3024 WZ Rotterdam THE NETHERLANDS telephone: +31-108414390 +31-611118642 email: info@dutchoi.com internet: www.dutchoi.com	 Waalhaven Oostzijde 85 3087 BM Rotterdam THE NETHERLANDS telephone: +31-880764800 email: info@smitlamnalco.com internet: www.smitlamnalco.com