



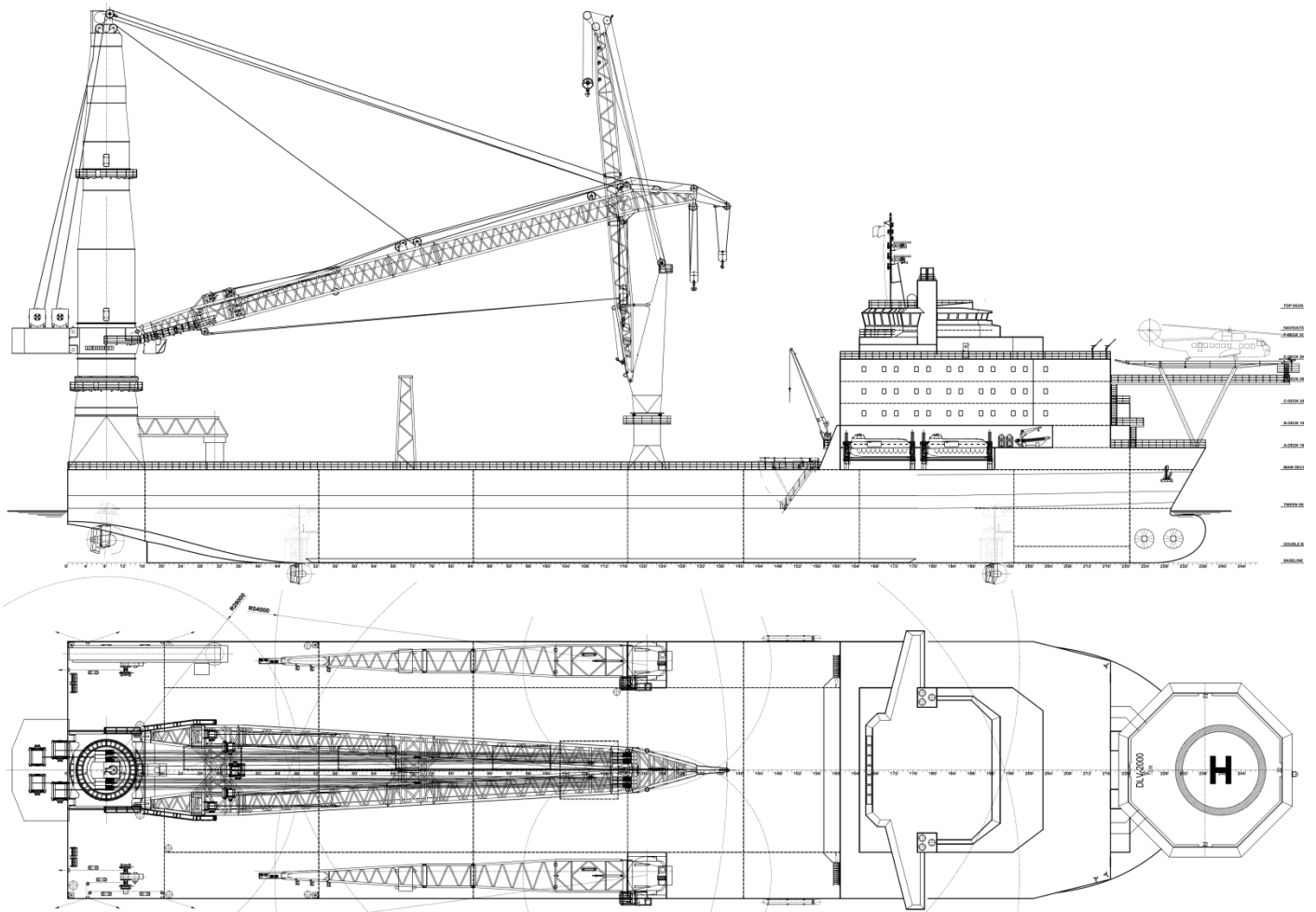
The DLV-2000 is a self propelled, DP-3 crane/ accommodation vessel that has been designed to perform a number of tasks.

Using the 2,000 metric ton main crane the vessel can be deployed for installation, maintenance and removal of fixed and/or floating offshore structures.

The vessel can be kept in position by means of its DP-3 compliant dynamic positioning system, or by means of an optional 8/10 point mooring system.

The deckhouse provides accommodation for 500 persons. A heave compensated gangway allows crew to transfer to fixed offshore structures.

The vessel has been designed to fit a future well stimulation tower. Once DP-3 compliance is not required, the vessel can work up to its maximum design environment in DP-2 mode. ▶



Principal Characteristics

Loa	165.00 m	V	12 kn
Lwl	160.00 m	Power Generation	4 x 2,765 kW
Lpp	155.00 m		2 x 3,685 kW
B	37.20 m	Type of Fuel	MDO/MGO
T _{design}	7.90 m	Main Propulsion	2 x 3,500 kW azimuth thrusters aft
T _{scantling}	8.40 m	DP Thrusters	3 x 2,000 kW retractable azimuth
D	13.50 m	Bow Thruster	2 x 1,500 kW tunnel thruster
		Deckload	10 t/m ²
		Free Deckspace	4,166 m ²
		Endurance	100 days offshore

Class notation: ABS +A1(E) +AMS + ACCU +DPS-3 OSV(Heavy Lift, FFV 2, SPS) ENVIRO GP HELIDK

Power Distribution System

Electrical Distribution 6.6 kV Switchboards in 3 separate switchboard rooms

Accommodation

Capacity 500 POB in single, double and 4-person cabins with individual attached bathroom
50 single cabins
75 double cabins
75 4-person cabins

Noise level compliant to IMO A.468 (XII)

Cargo Capacities

Dry cargo 3 holds of 533 m², 533 m² and 599 m²

Tanks for	MDO	5,110 m ³
	MGO	678 m ³
	Fresh Water	1,600 m ³

Deck Equipment

Optional Anchor Mooring System: 8/10 point with StevPris or similar anchors

Main Crane Main Hook Capacity: 2,000 t @ 28 m outreach
1,600 t @ 33.8 m outreach
1,200 t @ 40.6 m outreach
800 t @ 53.9 m outreach

Auxiliary Hook I Capacity: 200 t @ 84.1 m outreach
Auxiliary Hook II Capacity: 50 t @ 88.2 m outreach

Auxiliary Crane 2 x 100 t @ 18 m outreach

Helideck suitable for Sikorsky S61N/S92 with a maximum take-off weight of 12.8 t

Aluminium Telescopic Gangway for access to offshore platforms

Class 2 Fire Fighting equipment

Environmental conditions

Service Area	Worldwide
Significant wave height, (Hs)	< 3.0 m
Wind speed, 1 min. sust. (Vw)	12.5 m/s
Current speed, (Vc)	2.0 kn ◀

©Copyright Dutch Offshore Innovators BV. This document and its contents are the intellectual property of Dutch Offshore Innovators BV, and as such this document and its content, or any part thereof, may not be made known, be copied, or be multiplied or in any other way used without the permission of Dutch Offshore Innovators BV.

DUTCH OFFSHORE INNOVATORS

Kratonkade 748

3024 EX Rotterdam

THE NETHERLANDS

Telephone: +31-108414390/+31-611118642

Email: info@dutchOI.com