

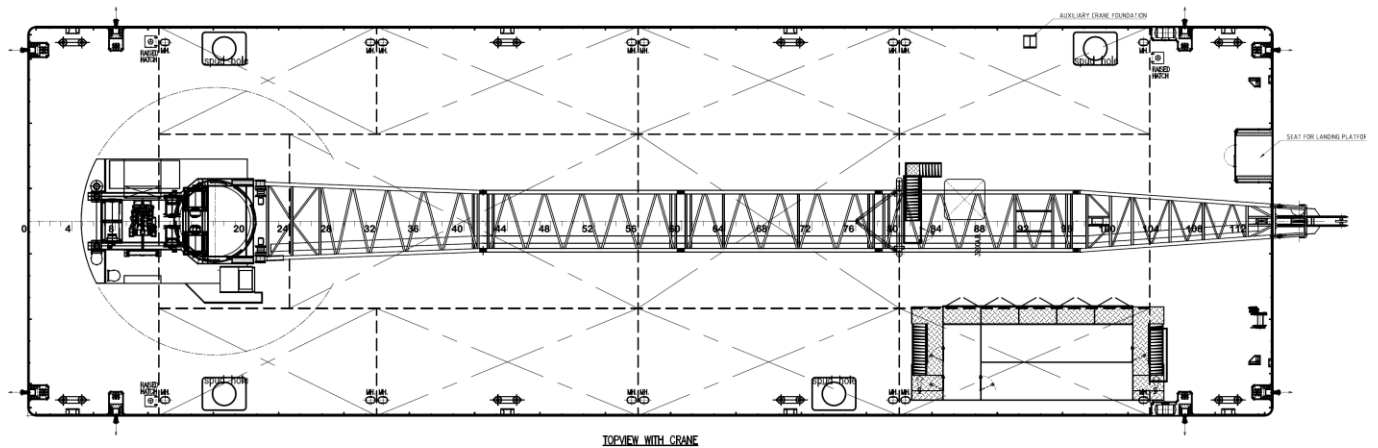
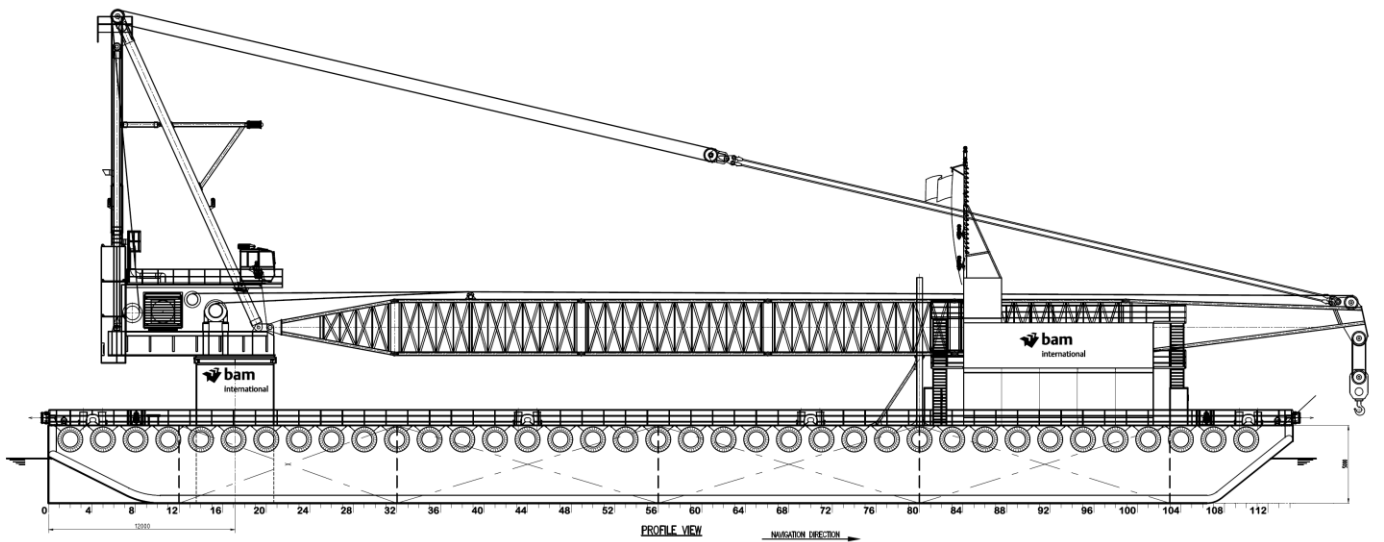
The 400t crane pontoon has been designed in 2012 for BAM International BV, one of the leading Dutch civil contractors.

The construction of the pontoon has been contracted to DAMEN Shipyards of the Netherlands.

The 400 metric ton main crane can be deployed for a range of installation tasks, with a strong focus on marine pile driving.

The vessel can be kept in position by means of its 8 point mooring system or by a set of four spud poles. The winches are located below the maindeck to keep as much of the deck area free from obstructions.

A containerized deckhouse provides space for power generation, stores, workshops, accommodation and a control station. ▶



Principal Characteristics

Loa	80.00 m
Lwl	78.56 m
Lpp	78.56 m
B	25.00 m
T _{design}	2.85 m
T _{scantling}	4.05 m
D	5.00 m
DW	+/- 3,200t @ 2.85m

Deckload	10 t/m ²
Power Generation	2x147 kW
Type of Fuel	MGO
Tank Capacities:	
Fuel oil	50 m ³
Fresh water	20-30 m ³
Sewage	20 m ³
Dirty oil	20 m ³

Class notation: BV I⁺HULL,•MACH, pontoon – crane, unrestricted navigation, ⁺ALM

©Copyright Dutch Offshore Innovators BV. This document and its contents are the intellectual property of Dutch Offshore Innovators BV, and as such this document and its content, or any part thereof, may not be made known, be copied, or be multiplied or in any other way used without the permission of Dutch Offshore Innovators BV.

DUTCH OFFSHORE INNOVATORS

Kratonkade 748
 3024 EX Rotterdam
 THE NETHERLANDS
 Telephone: +31-108414390/+31-611118642
 Email: info@dutchOI.com